



PUBLIC WORKS

Culvert Pipe Crossing Repair Sweetwater Drive

Stormwater Management Division



Funding

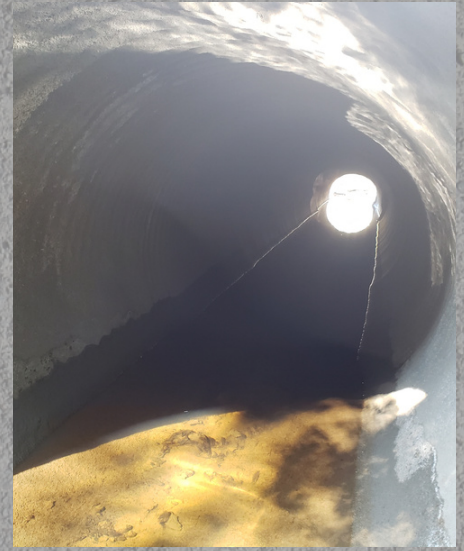
Stormwater
Management Funds



Design

Vortex Services

Scope



Construction

Vortex Services

The existing stream in Richland County that connects Young's Pond with Jordan's Pond flows through four existing 60" corrugated metal pipes beneath Sweetwater Drive. The corrugated metal pipes had deteriorated and were in need of rehabilitation. In October 2020, the Stormwater Management Division contracted with Vortex Services, Inc. to repair these existing road culvert pipes. The contractor repaired the pipes using a spray application of specified structural GeoKrete liner to reinforce and support the pipes, also keeping the road open for access to the residency in that area. This was the first application of this method of damaged pipe repair and rehabilitation by Richland County in its infrastructure maintenance mission.